



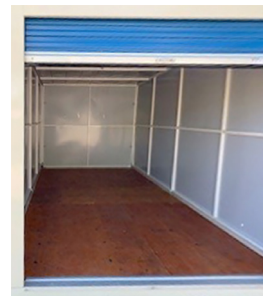
REAL REVENUE FROM YOUR OPEN LAND



StrongSeam Storage Solutions is a Midwest provider of innovative and high-quality self-storage solutions. Offering a range of moveable, drive-up self-storage and infill solutions for Self-Storage business locations, we strive to deliver on designs that emphasize convenience and accessibility.

Our **moveable self-storage units** can be set up in areas that are lighted, fenced, and monitored, providing a safe and secure environment for stored items. And because they are moveable, moveable storage units can be placed on easements where restrictions would prevent building permanent structures. With larger square footage compared to the competition, the ability to ship 10 units on a single truck, and assembly by a highly qualified and experienced team, StrongSeam Storage Solutions is the ideal choice for those looking for an efficient, reliable and relocatable storage solution.

These modular units are classified as equipment and can be depreciated from property taxes in as little as one year. As moveable storage units, standard zoning and building permits may not be required. Moveable storage units may offer quicker implementation and tax benefits (check your local ordinances).



UNIT SPECIFICATIONS

- | | | |
|--|--|---|
| • Dimensions:
20' L x 10' W x 9' H | • Weights
2,100 lbs, one door
2,300 lbs, two side doors
2,500 lbs, four side doors | • Door Openings
8' W x 7' H one end door
8' W x 7' H two side doors
4' W x 7' H four side doors |
|--|--|---|

StrongSeam Storage Solutions Moveable Self-Storage Features:

Our **moveable self-storage units** feature some of the largest square footage in the industry and can be flattened and shipped 10 units on a single truck – right to your secure yard. A team of highly qualified and experienced professionals will assemble your self-storage units on-site to increase your self-storage capacity in no time.

ALL-STEEL CONSTRUCTION

- A-36 & A-500 structural steel
- Base frame thickness: 2.75mm (12ga)
- Wall panel thickness: 0.7mm (24ga)
- Roof thickness: 2.75mm (12ga)
- Stainless steel hardware

INTERIOR

- 3/4" wood flooring, sealed with polyurethane coating that is non-slip, non-toxic and low VOC
- Wall vents to allow air flow
- Removable steel partition

STRUCTURE

- 10,000 lbs on base, 120 mph wind-resistant, 60psf snow load
- Fully sealed and gasketed - weather, water and pest-proof
- Sloping standing seam roof directs water away from doors
- Easy to build - 8 nuts/bolts and 20 screws
- Forklift pockets in base for easy maneuvering

FEATURES

- Full installation services available
- 20+ year lifespan of product
- Manufacturing material and workmanship - 1 year warranty
- Paint is customizable to any color - 5 year warranty

PREMIUM CAR/ATV STORAGE UNIT

- Designed for vehicle storage, this unit is upsized with generous space for larger vehicles, ATV's and even some boats with trailers
- Unit has upsized wall and roof framing, heavy-duty Apitong flooring, and heavier gauge structural tubing and steel reinforcements.
- Heavier construction assures user of greater rigidity and weather resistance.
- Due to its size and weight, these units are shipped 5 units per truck.



1 END DOOR

One 200 sqft rentable unit

DIMENSIONS

Exterior: 241" L x 121" W x 109" H
Interior: 236" L x 116" W x 99" H
Door Opening: 96" W x 84" H

WEIGHT

Tare: 2,100 lbs



2 SIDE DOORS

Two 100 sqft rentable units

DIMENSIONS

Exterior: 241" L x 121" W x 109" H
Interior: 236" L x 116" W x 99" H
Door Opening2: 96" W x 84" H

WEIGHT

Tare: 2,300 lbs



4 SIDE DOORS

Four 50 sqft rentable units

DIMENSIONS

Exterior: 241" L x 121" W x 109" H
Interior: 236" L x 116" W x 99" H
Door Opening: 48" W x 84" H

WEIGHT

Tare: 2,500 lbs



CAR/ATV STORAGE UNIT

One 360 sqft rentable unit

DIMENSIONS

Exterior: 360" L x 144" W x 120" H
Interior: 356" L x 140" W x 116" H
Door Opening: 120" W x 96" H

WEIGHT

Tare: 6,700+ lbs

These units can be customized by size and color.



This document is intended solely for the individual or entity that received it from StrongSeam Storage Solutions. This document and its depictions, photographs and contents are confidential or proprietary information of StrongSeam Storage Solutions and shall not be disclosed, reproduced or transmitted in any form or by any means without the written permission of StrongSeam Storage Solutions. All StrongSeam Storage Solutions designs, features, square footages, descriptions, photographs and depictions of any proposed projects or facilities are provided for informational purposes only and are subject to change. All rights reserved. ©2023 StrongSeam Storage Solutions



131 South 147th East Ave., Tulsa, OK 74116

storagesolutions.com